

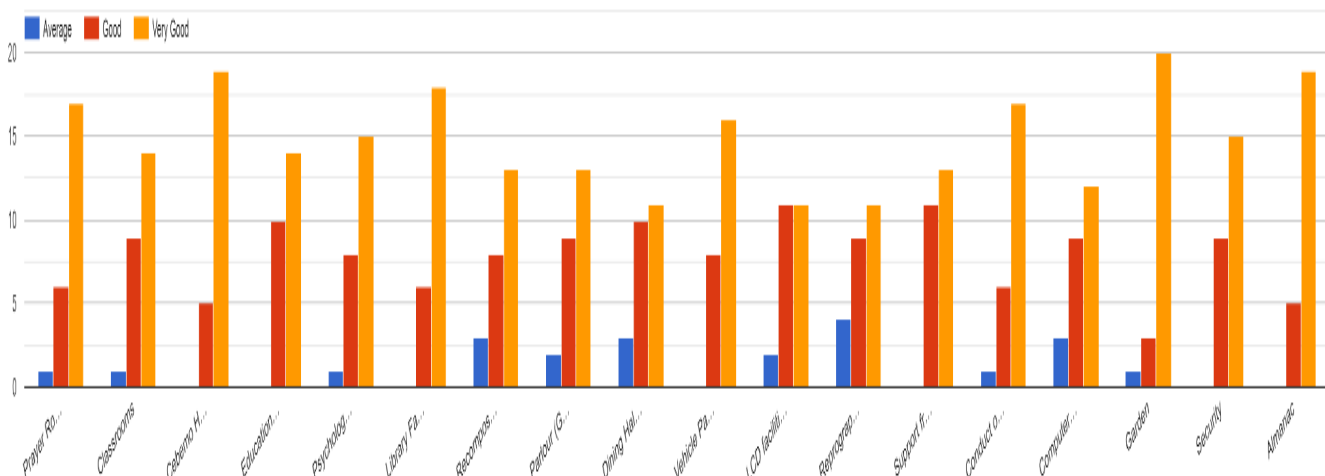
Quality Assurance Rubrics 20-22

A. Opinion about infrastructural facilities

| | Average % | Good % | Very Good % | Mean | S.D |
|---|------------------|---------------|--------------------|-------------|------------|
| A. Give your opinion about the following: [c. Prayer Room] | 4.2 | 25.0 | 70.8 | 2.66 | .56 |
| A. Give your opinion about the following: [a. Classrooms] | 4.2 | 37.5 | 58.3 | 2.54 | .58 |
| A. Give your opinion about the following: [b. Cebemo Hall/ Multipurpose Hall] | | 20.8 | 79.2 | 2.79 | .41 |
| A. Give your opinion about the following: [d. Educational Technology Room / Audio Visual Room] | | 41.7 | 58.3 | 2.58 | .50 |
| A. Give your opinion about the following: [e. Psychology Lab] | 4.2 | 33.3 | 62.5 | 2.58 | .58 |
| A. Give your opinion about the following: [f. Library Hours] | | 25.0 | 75.0 | 2.75 | .44 |
| A. Give your opinion about the following: [l. Recomposing Convalescence Room (Sick Room)] | 12.5 | 33.3 | 54.2 | 2.41 | .71 |
| A. Give your opinion about the following: [m. Parlour (Guest Room)] | 8.3 | 37.5 | 54.2 | 2.45 | .65 |
| A. Give your opinion about the following: [n. Dining Hall (Anand Bhavan)] | 12.5 | 41.7 | 45.8 | 2.33 | .70 |
| A. Give your opinion about the following: [p. Vehicle Parking] | | 33.3 | 66.7 | 2.66 | .48 |
| A. Give your opinion about the following: [q. LCD / Smart Board facilities] | 8.3 | 45.8 | 45.8 | 2.37 | .64 |

| | | | | | |
|---|-------------|-------------|-------------|-------------|------------|
| A. Give your opinion about the following: [s. Reprographic facilities] | 16.7 | 37.5 | 45.8 | 2.29 | .75 |
| A. Give your opinion about the following: [t. Assistance from Office] | | 45.8 | 54.2 | 2.54 | .50 |
| A. Give your opinion about the following: [u. Examination seating facilities] | 4.2 | 25.0 | 70.8 | 2.66 | .56 |
| COMPFACI | 12.5 | 37.5 | 50.0 | 2.37 | .71 |
| A. Give your opinion about the following: [x. Garden] | 4.2 | 12.5 | 83.3 | 2.79 | .50 |
| A. Give your opinion about the following: [o. Security facilities] | | 37.5 | 62.5 | 2.62 | .49 |
| A. Give your opinion about the following: [z. Almanac] | | 20.8 | 79.2 | 2.79 | .41 |
| A. Give your opinion about the following: [d. Educational Technology Room / Audio Visual Room] | 4.2 | 25.0 | 70.8 | 2.66 | .56 |

A. Give your opinion about the following:



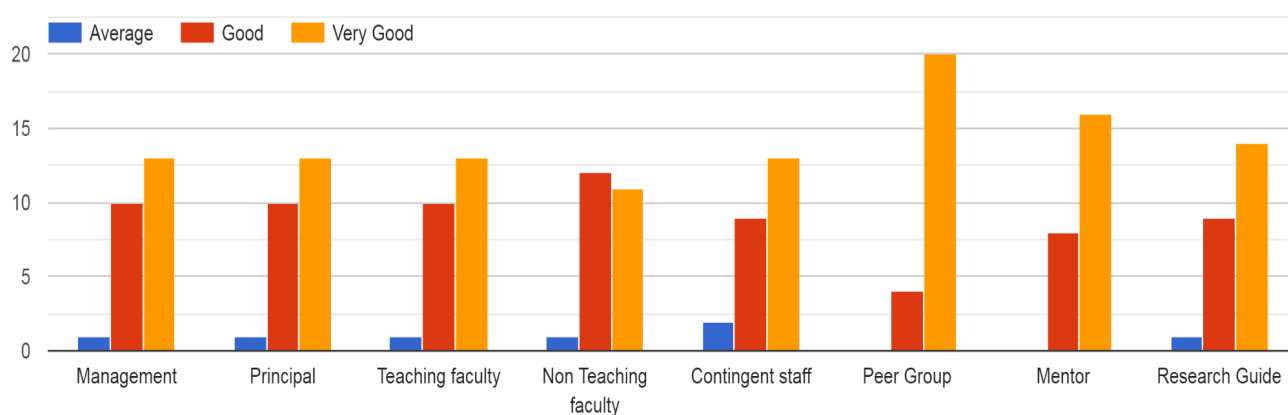
Interpretation: The highest mean was observed with respect to maintenance of the garden, Cebemo hall and almanac. The lowest mean was observed in maintenance of anand bhavan, reprographic facilities and computer facilities. These were noted and necessary action taken. The number of computers were increased, the software upgraded, and internet connectivity was improved. The maintenance of reprographic facilities were done, and facilities at anand bhavan were improved.

B. Rapport with human resources :

| | Average % | Good % | Very Good % | Mean | S.D |
|------------------|-----------|--------|-------------|------|-----|
| MANAGEMENT | 4.2 | 41.7 | 54.2 | 2.50 | .58 |
| PRINCIPAL | 4.2 | 41.7 | 54.2 | 2.50 | .58 |
| TEACHING FACULTY | 4.2 | 41.7 | 54.2 | 2.50 | .58 |
| NON TEACH GFAC | 4.2 | 50.0 | 45.8 | 2.41 | .58 |
| CONTGNTSTAFF | 8.3 | 37.5 | 54.2 | 2.45 | .65 |

| | | | | | |
|-----------------------|-----|------|------|------|-----|
| PEERGRP | | 16.7 | 83.3 | 2.83 | .38 |
| MENTOR | | 33.3 | 66.7 | 2.66 | .48 |
| RESEARCH GUIDE | 4.2 | 37.5 | 58.3 | 2.54 | .58 |

B. Your rapport with :



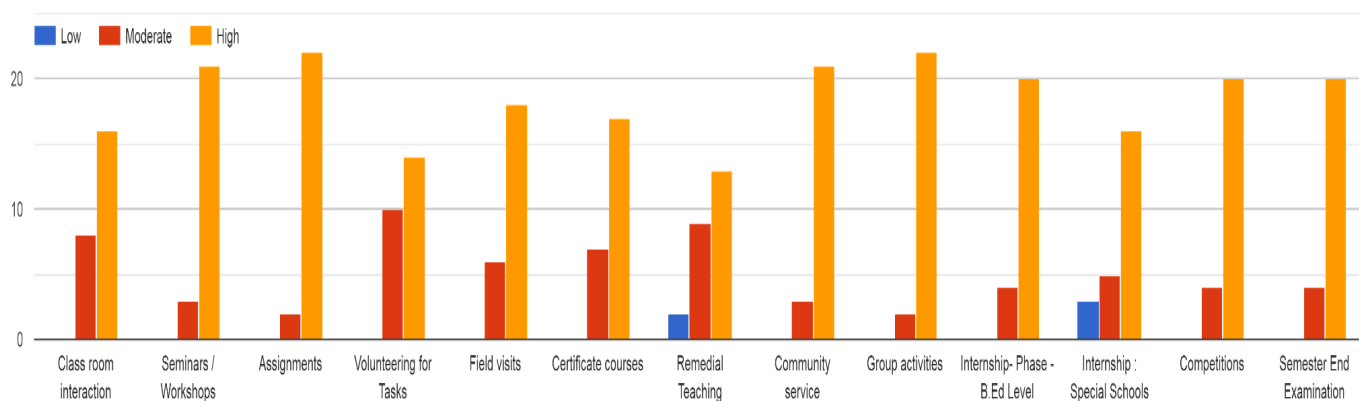
Interpretation: The feedback indicates a good rapport with respect to management, teaching faculty and non teaching faculty. The highest mean is observed among peer groups and with mentors.

C. Your participation and quantum of learning in

| | Low % | Moderate % | High % | Mean | S.D |
|--------------------|--------------|-------------------|---------------|-------------|------------|
| CLSRMINTCTN | | 33.3 | 66.7 | 2.66 | .48 |
| SEMNRWRKSHP | | 12.5 | 87.5 | 2.87 | .33 |
| ASSGNMT | | 8.3 | 91.7 | 2.91 | .28 |
| VOLNTRTASK | | 41.7 | 58.3 | 2.58 | .50 |

| | | | | | |
|----------------------|------|------|------|------|-----|
| FIELDVISIT | | 25.0 | 75.0 | 2.75 | .44 |
| CERTFCTCRSE | | 29.2 | 70.8 | 2.70 | .46 |
| REMDLTEACHG | 8.3 | 37.5 | 54.2 | 2.45 | .65 |
| COMMUNTYSRVCE | | 12.5 | 87.5 | 2.87 | .33 |
| GRPACTVTS | | 8.3 | 91.7 | 2.91 | .28 |
| INTERNSHIP1 | | 16.7 | 83.3 | 2.83 | .38 |
| INTERNSHIP2 | 12.5 | 20.8 | 66.7 | 2.54 | .72 |
| COMPTNS | | 16.7 | 83.3 | 2.83 | .38 |
| SEMEDEXAM | | 16.7 | 83.3 | 2.83 | .38 |

C. Your participation and quantum of learning in the following areas :

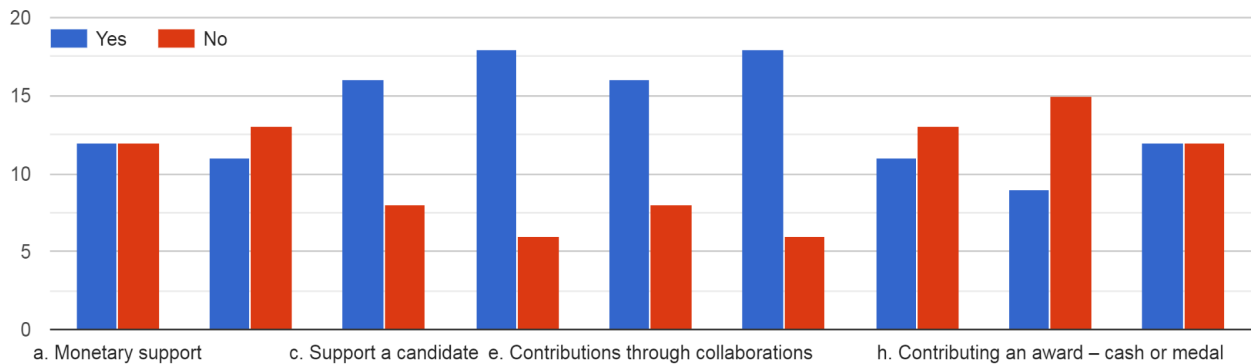


Interpretation: The quantum of learning in most of the curricular aspects showed a high mean. The highest mean was observed in community programme and lowest in classroom interaction. The two aspects that require improvement are remedial programme and internships in special schools.

D. Areas you would prefer to contribute towards the development of the institution as an alumnus

| | No % | Yes % | Mean | S.D |
|-----------------|------|-------|------|-----|
| MONTRYSUPT | 50.0 | 50.0 | 50 | .51 |
| INFRASTRCTLSUPP | 54.2 | 45.8 | 45 | .50 |
| SUPPCAND | 33.3 | 66.7 | 66 | .48 |
| ENHNCGRESRCE | 25.0 | 75.0 | 75 | .44 |
| CONTRBTNCOLLAB | 33.3 | 66.7 | 66 | .48 |
| ENRICHTLP | 25.0 | 75.0 | 75 | .44 |
| LEADALUMNIORG | 54.2 | 45.8 | 45 | .50 |
| CONTRBTGAWARD | 62.5 | 37.5 | 37 | .49 |
| ROLLGTROPHY | 50.0 | 50.0 | 50 | .51 |

D. Areas you would prefer to contribute towards the development of the institution as an alumnus



Interpretation: The students as alumni

E. The degree to which you could observe change in you in the following areas

| | Low % | Moderate % | High % | Mean | S.D |
|------------|-------|------------|--------|------|-----|
| ATTSELF | 4.2 | 25.0 | 70.8 | 2.66 | .56 |
| ATTOTHR | 4.2 | 29.2 | 66.7 | 2.62 | .57 |
| WORKPTRN | | 20.8 | 79.2 | 2.79 | .41 |
| PUNCTLTY | | 16.7 | 83.3 | 2.83 | .38 |
| TIMEMNGMT | | 16.7 | 83.3 | 2.83 | .38 |
| READGHAB | | 37.5 | 62.5 | 2.62 | .49 |
| CONFLEVEL | | 33.3 | 66.7 | 2.66 | .48 |
| CLEANLINS | | 16.7 | 83.3 | 2.83 | .38 |
| SENSEDRESG | 4.2 | 16.7 | 79.2 | 2.75 | .53 |
| POLITNS | 4.2 | 16.7 | 79.2 | 2.75 | .53 |
| RULEREG | 8.3 | 12.5 | 79.2 | 2.70 | .62 |

E. The degree to which you could observe change in you in the following areas

